

Leicester City Council

Health and Community Involvement Scrutiny Commission 28 May 2013

Public Health responsibilities: initial schedule of consideration by the Health and Community Involvement Scrutiny Commission

1. Introduction

As the commission is aware from previous reports the transition of the Public Health function from NHS Leicester City to Leicester City Council was formally completed on the 1st April 2013. This included the transfer of relevant staff, commissioned contracts with service providers for Public Health services and a range of responsibilities given to the local authority by the Health and Social Care Act (2012). This note provides a brief update on the establishment of the Public Health team within the Council and proposes a timetable for the consideration by the Commission in 2013/14 of commissioned public health programmes.

2. Structure

Within the City Council the work of Public Health is under the direction of the Strategic Director of Adult Social Care and Health Deb Watson. This post includes the Statutory Chief Officer roles of Director of Public Health (DPH) and Director of Adult Social Services. The Division has a Divisional Director of Public Health.

An additional to the above posts a further 21 staff have transferred from NHS Leicester City to the City Council, 18 full time equivalents, plus four Speciality Registrars, who are public health trainees attached to the Division as part of a 5 year training programme, and not employed by the council. The organisational structure of the division is attached, Appendix A.

3. Function

The Health and Social Care Act (2012) lays out the more specific responsibilities of the Local Authority with regard to public health and the DPH. Mandatory responsibilities are:

- Commissioning sexual health services (except HIV treatment, Terminations of Pregnancy and GP contraceptive services)
- Health protection (duty on DPH to ensure plans in place to protect health of population) including community infection prevention and control
- Public Health advice and support to the NHS commissioners
- National Child Measurement Programme
- NHS health checks

Additional responsibilities emerged late in 2012/13 including community infection prevention and control and Clinical Governance arrangements.

Other responsibilities to be undertaken according to local need as identified through the Joint Strategic Needs Assessment and the Joint Health and Wellbeing Strategy are listed in Appendix B.

4. Budget

The local authority has been allocated a ring-fenced public health grant for 2013/14 of £19,995k and for 2014/15 of £21,995k. The budget for 2013/14 is being finalised, particularly with regard to infrastructure costs within the city council and additional areas where investment will be required. These include Community Infection Control, Clinical Governance and other areas listed in Appendix B. Commissioned programme areas and estimated spend are listed in appendix C.

5. Consideration of commissioned programmes

Appendix C provides a list of the functional areas transferred to the city council and the value of current contracts. The Commission has requested a timetable by which it could consider each of the functional areas as indicated below and in appendix C. Discussion with the Chair and Vice Chair of the Commission has resulted in a proposal that these be considered over a two year period. The exact scheduling detail will be considered through the regular Agenda Meetings.

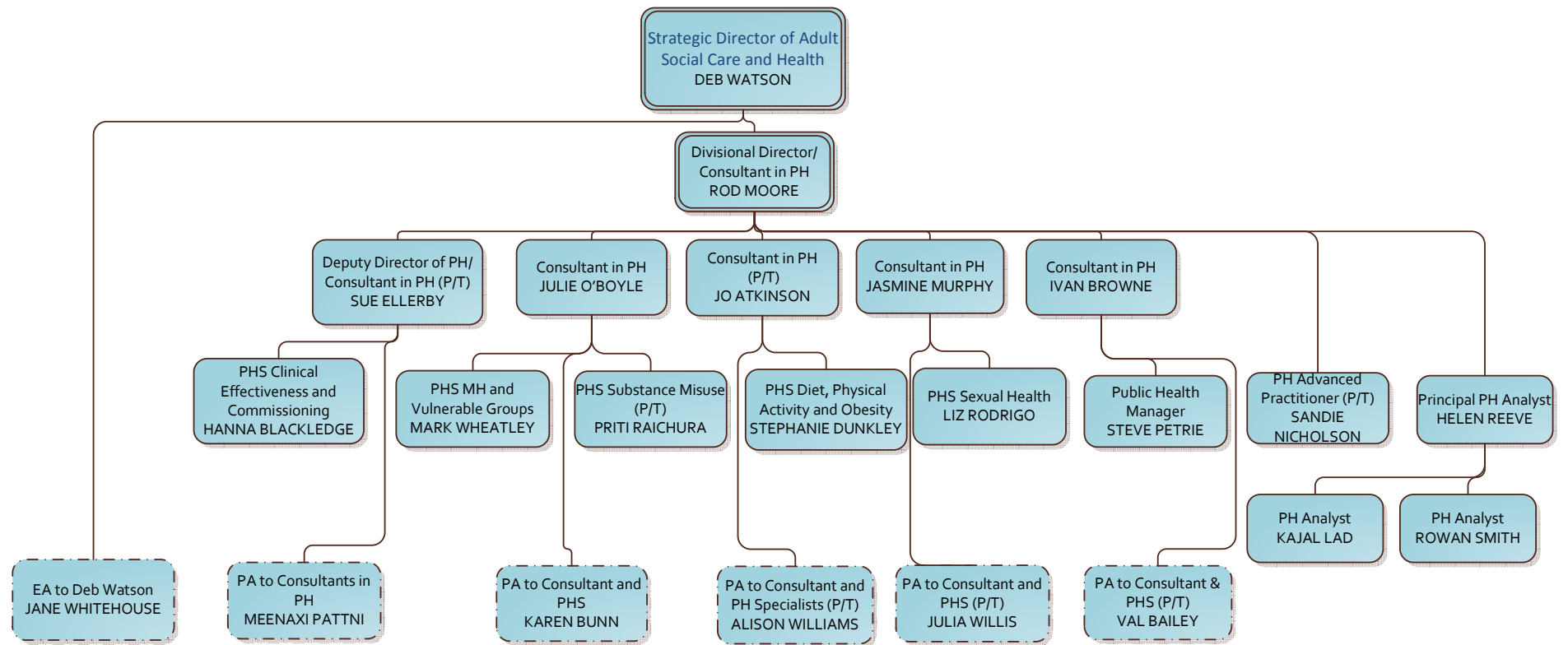
Commissioned area
NHS Health Checks
Drug and Alcohol prevention and treatment
Tobacco Control and smoking cessation
School Nursing
Community Programmes
Sexual Health
Healthy weight and physical activity
Public health aspects of community safety
Surveillance and academic support
Other

Rod Moore

Divisional Director Public Health

8 May 2013

Appendix A



Speciality Registrars:

- Mary Hall
- Stephen Gunther
- Sarah Theaker
- Jane Bethea

Appendix B

Tobacco control

Alcohol and drug misuse services

Obesity and community nutrition

Physical activity

Public health services for children and young people aged 5-19

Public mental health

Oral health (but specialist expertise with PH England)

Accident prevention

Interventions to prevent and reduce birth defects

Behaviour and lifestyle campaigns to prevent cancer and long term conditions

Workplace health

Support and challenge for NHS delivered immunisation and screening programmes

Reduction of excess winter deaths

Promotion of community safety, violence protection

Tackling social exclusion

Initiatives that reduce public health impacts of environmental risks

Appendix C

Leicester City Council Public Health Commissioned Services

Area as at April 2013	Funding £'s	Notes for Health and Community Involvement Scrutiny Commission
NHS Health Checks	891,000	
Drug and Alcohol prevention and treatment	6,100,000	Services currently being reprocured. Subject to separate Review Report by Health and Community Involvement Scrutiny Commission
Tobacco Control and smoking cessation	1,197,000	
School Nursing	1,909,000	
Community Programmes	685,000	
Sexual Health	4,676,094	In process of reprocurement as integrated sexual health services.
Healthy weight and physical activity	657,050	
Public health aspects of community safety	90,000	
Surveillance and academic support	140,210	
Other	757,575	
	17,102,,929	